



## Rabbit anti Corin (NT) Polyclonal Antibody

Alternative Name(s): Pro-ANP-converting enzyme (Corin), LRP4; CRN;

### Order Information

- **Description:** Corin (NT)
- **Catalogue:** 601-470
- **Lot:** See label
- **Size:** 100ug/200ul
- **Host:** Rabbit
- **Clone:** nan
- **Application:** IHC(P), WB
- **Reactivity:** Ms, Rt

### **ANTIGEN PREPARATION**

A synthetic peptide corresponding to the N-terminus (within 60-150aa) of mouse corin protein.

### **BACKGROUND**

Corin, is a glycosylated protease on the cell surface as a single pass type II membrane protein. It is located on trial and brain natriuretic peptides (ANP and NNP) expressing cell surfaces. It may occur in both zymogen and catalytically active forms. The multi-domain transmembrane serine protease corin cleaves pro-atrial natriuretic peptide (pro-ANP) in vitro to generate an active hormone, ANP at R123-S124. Corin is higher expressed on cardiomyocytes. It may also contribute to the regulation of the natriuretic peptide system in vivo, and might be an attractive target for treatment of cardiovascular diseases.

### **PURIFICATION**

The Rabbit IgG is purified by Epitope Affinity Purification

### **FORMULATION**

This affinity purified antibody is supplied in sterile Phosphatebuffered saline (pH7.2) containing antibody stabilizer

### **SPECIFICITY**

This antibody recognizes ~120 kDa of mouse Corin. It also reacts with rat. The other species are not tested.

### **STORAGE**

The antibodies are stable for 24 months from date of receipt when stored at -20oC to -70oC. The antibodies can be stored at 2oC-8oC for three month without detectable loss of activity. Avoid repeated freezing-thawing cycles.

### **APPLICATIONS/SUGGESTED WORKING DILUTIONS\***

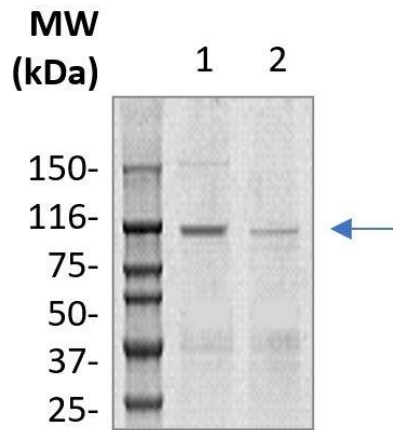
- Western Blot: 0.1-1 µg/ml
- ELISA: 0.01-0.1 µg/ml
- Immunoprecipitation: 2-5 µg/ml
- IHC: 2-10 µg/ml
- Flow cytometry: Not tested
- Molecular Weight: 120.0
- Positive Control: Kidney Tissue
- Cellular Location: Cell Membrane

\*Optimal dilutions should be determined by researchers for the specific applications.

### **FOR RESEARCH USE ONLY.**

AbboMax, Inc 2528 Qume Drive, Suite 8, San Jose, California 95131, USA  
1 408-573-1898 (Tel). 1 408-573-1858 (Fax). [www.abbomax.com](http://www.abbomax.com) [info@abbomax.com](mailto:info@abbomax.com)

**DATA ATTACHMENTS**



Western Blot: The whole cell lysates derived from mouse heart (lane 1) or rat heart (lane 2) were immunoprobed by Rabbit anti-Corin (NT) (Cat#601-470) at 1:500. An immunoreactive band is observed around ~120kDa. A faint band ~ 205 kDa is observed in mouse heart tissue.

**REFERENCES**

**FOR RESEARCH USE ONLY.**